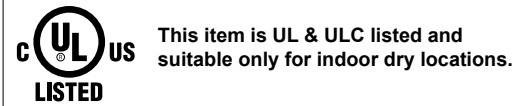


KUZCO LIGHTING

Installation for 40491

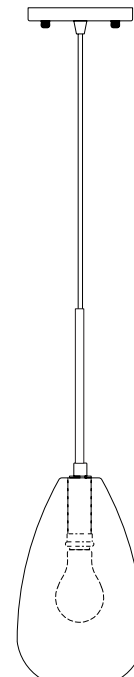
Amber: 40491A / Blue: 40491B / Green: 40491G

Red: 40491R / White: 40491

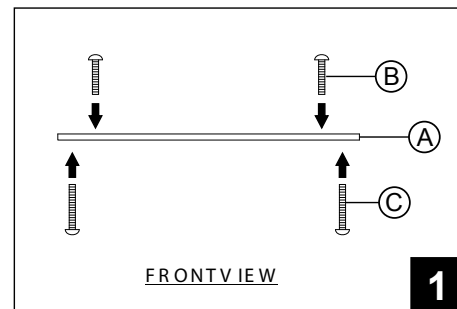


START FROM HERE

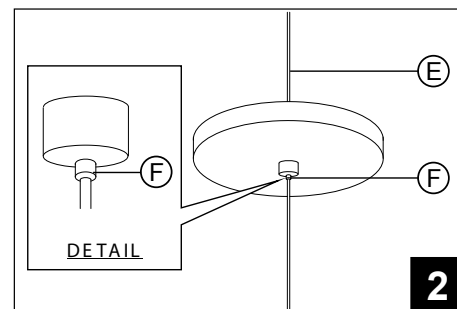
1. Before assembling lighting fixtures, make sure you have electrical wiring experience or have your fixture installed by a qualified licensed electrician.
2. Prepare everything in a clear area.
3. Put on gloves all the time during this installation.
4. Take out fixture and glass from box.
5. Read instructions carefully before you assemble.



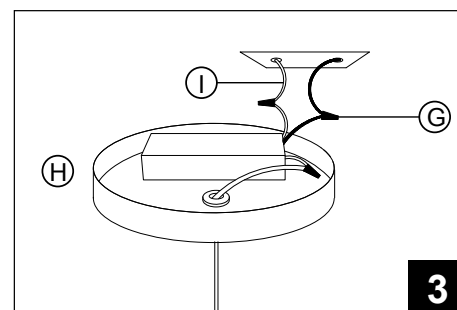
1. Take out the hanging bar (A) for mounting by threading two screws (B).
2. Then mount the hanging bar (A) carefully to the junction box by using the two screws (C) provided.



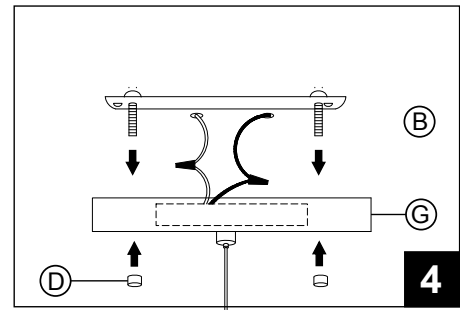
1. Determine the overall length you need the assembled fixture to be.
2. Adjust the fixture height: To extend the length by releasing the cord (E) or to shorten the cord (E) by pressing (F), then release (F) to lock and fasten the wire.



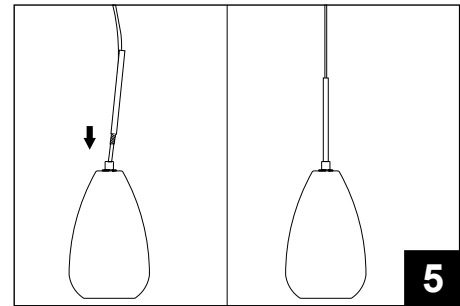
1. Turn off the power at the electrical panel.
2. Connect the power cords (I) by using the marettes (G) and connecting the white wire to neutral wire in the supply circuit. Connect the clear wire to the hot wire in the supply circuit.
3. Connect the ground wire from the fixture to the ground wire in the supply circuit.
4. Wrap excess cord together and put in canopy cover (H).



1. Carefully to tread on both ball knobs (D) and screws (B) to secure ceiling canopy (G) to the ceiling .



1. Screw in the metal rod (J) into the top of the fixture.



1. insert light (K) completely into the socket (L) .

